

12" x 12"

1 3/4"

3"

9"

10 1/4"

5"

7"

Score - - - - -

Cut - - - - -

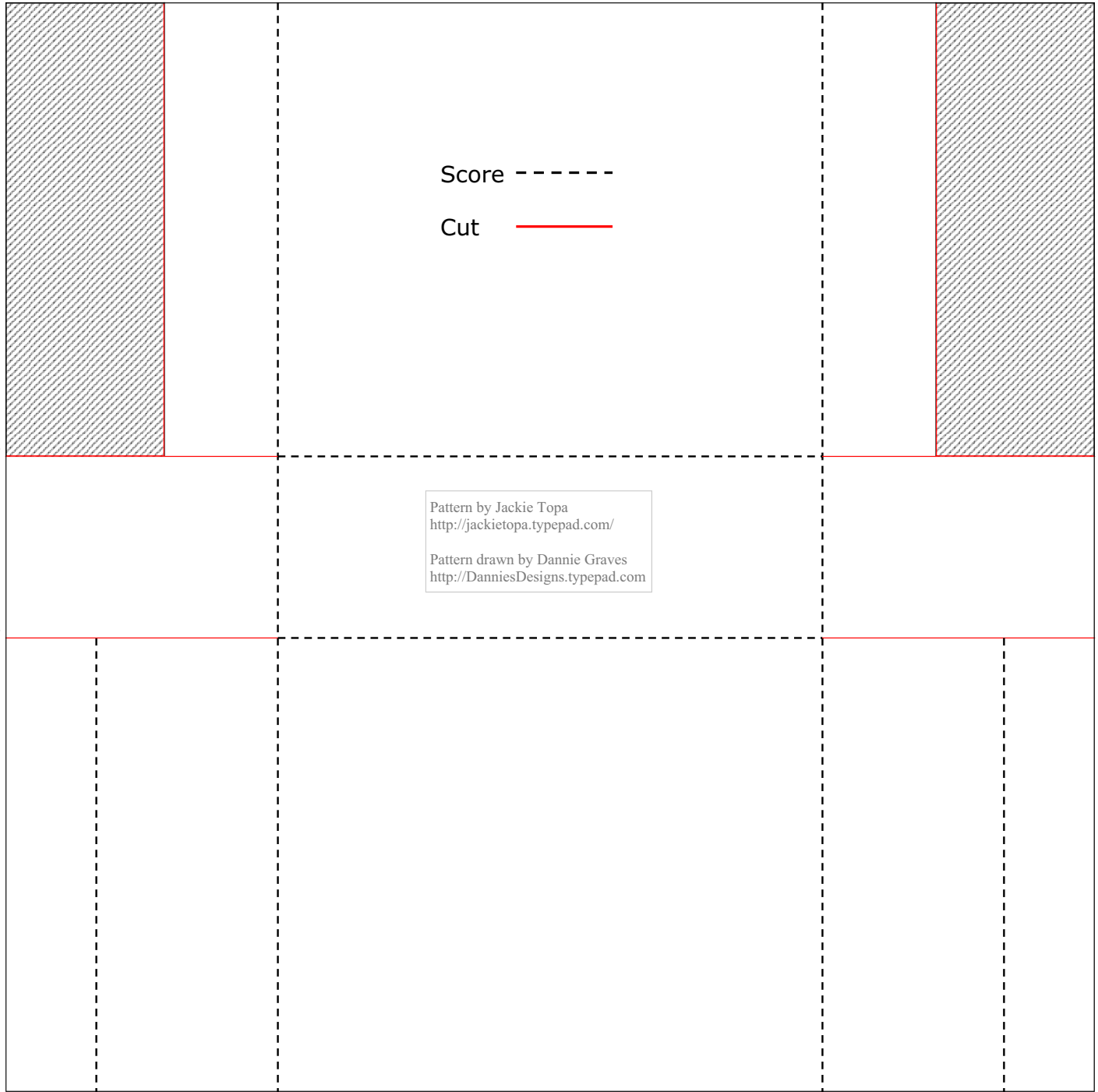
Pattern by Jackie Topa
<http://jackietopa.typepad.com/>
Pattern drawn by Dannie Graves
<http://DanniesDesigns.typepad.com>

1"

3"

9"

11"

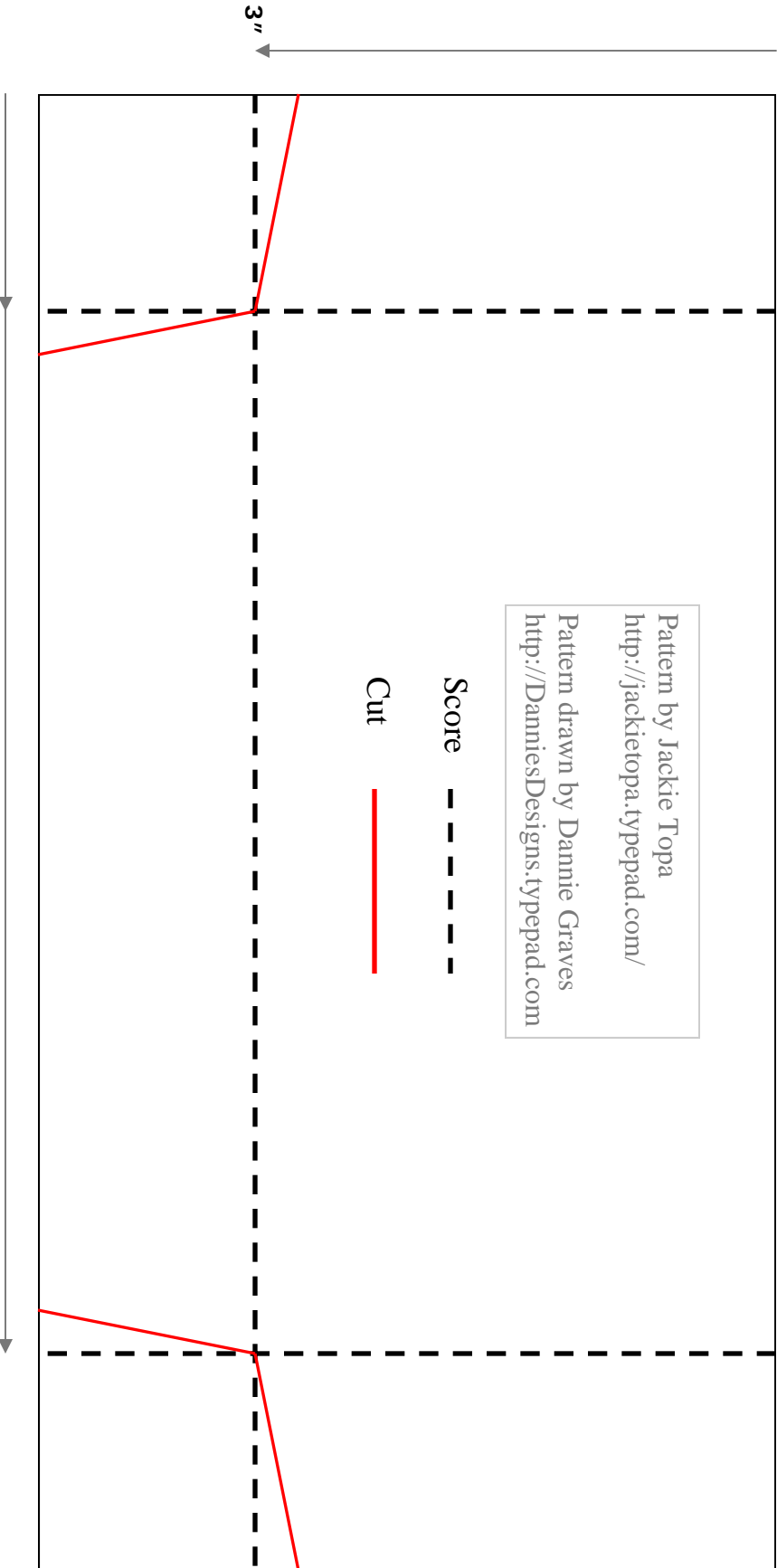


8 1/2" x 4 1/4"

Pattern by Jackie Topa
<http://jackietopa.typepad.com/>
Pattern drawn by Dannie Graves
<http://DanniesDesigns.typepad.com>

Score - - - - -

Cut ———

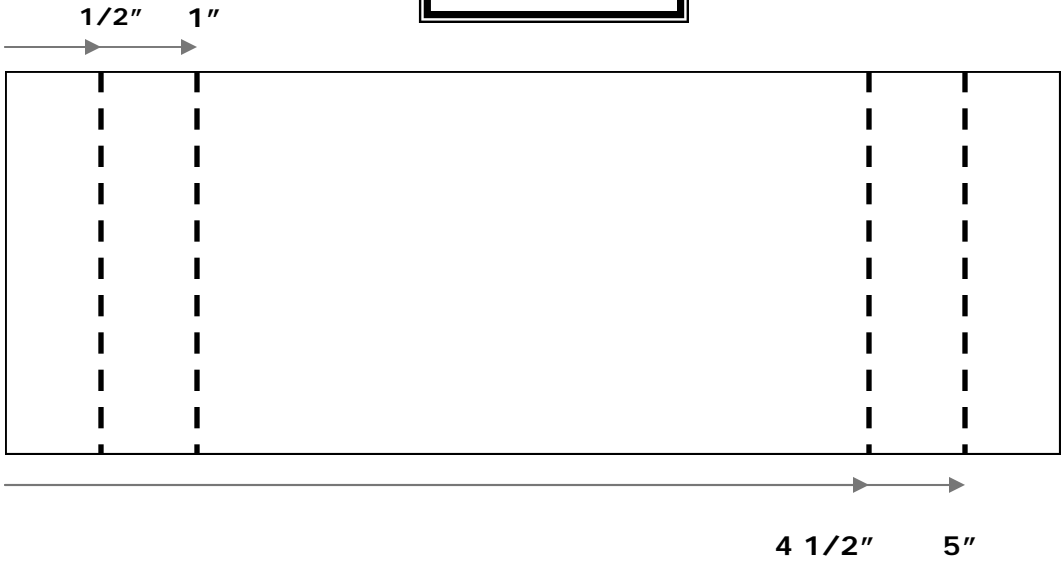


1 1/4"

7 1/4"

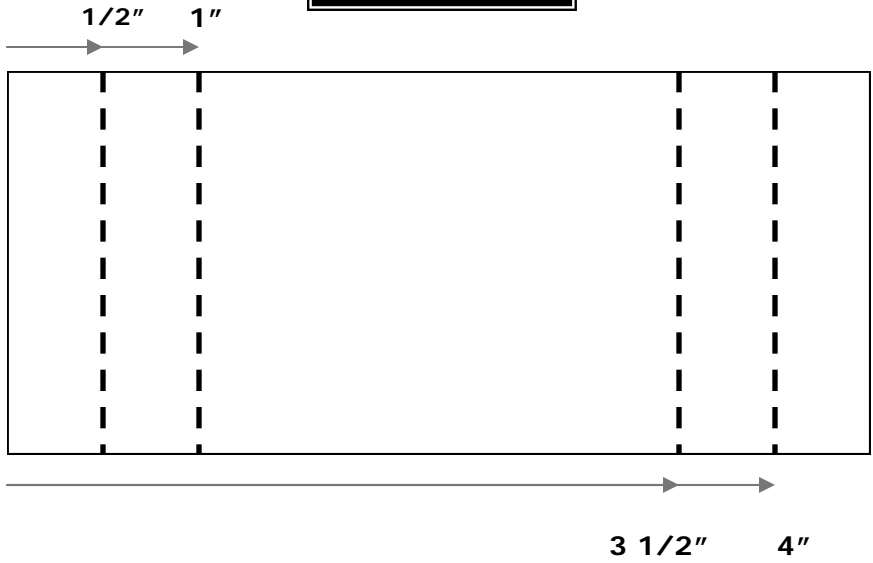
3"

5 1/2" x 2"



Pattern by Jackie Topa
<http://jackietopa.typepad.com/>
Pattern drawn by Dannie Graves
<http://DanniesDesigns.typepad.com>

4 1/2" x 2"



10 3/8" x 6 3/8"

Score - - - - -

Cut ———

Pattern by Jackie Topa
<http://jackietopa.typepad.com/>
Pattern drawn by Dannie Graves
<http://DanniesDesigns.typepad.com>

